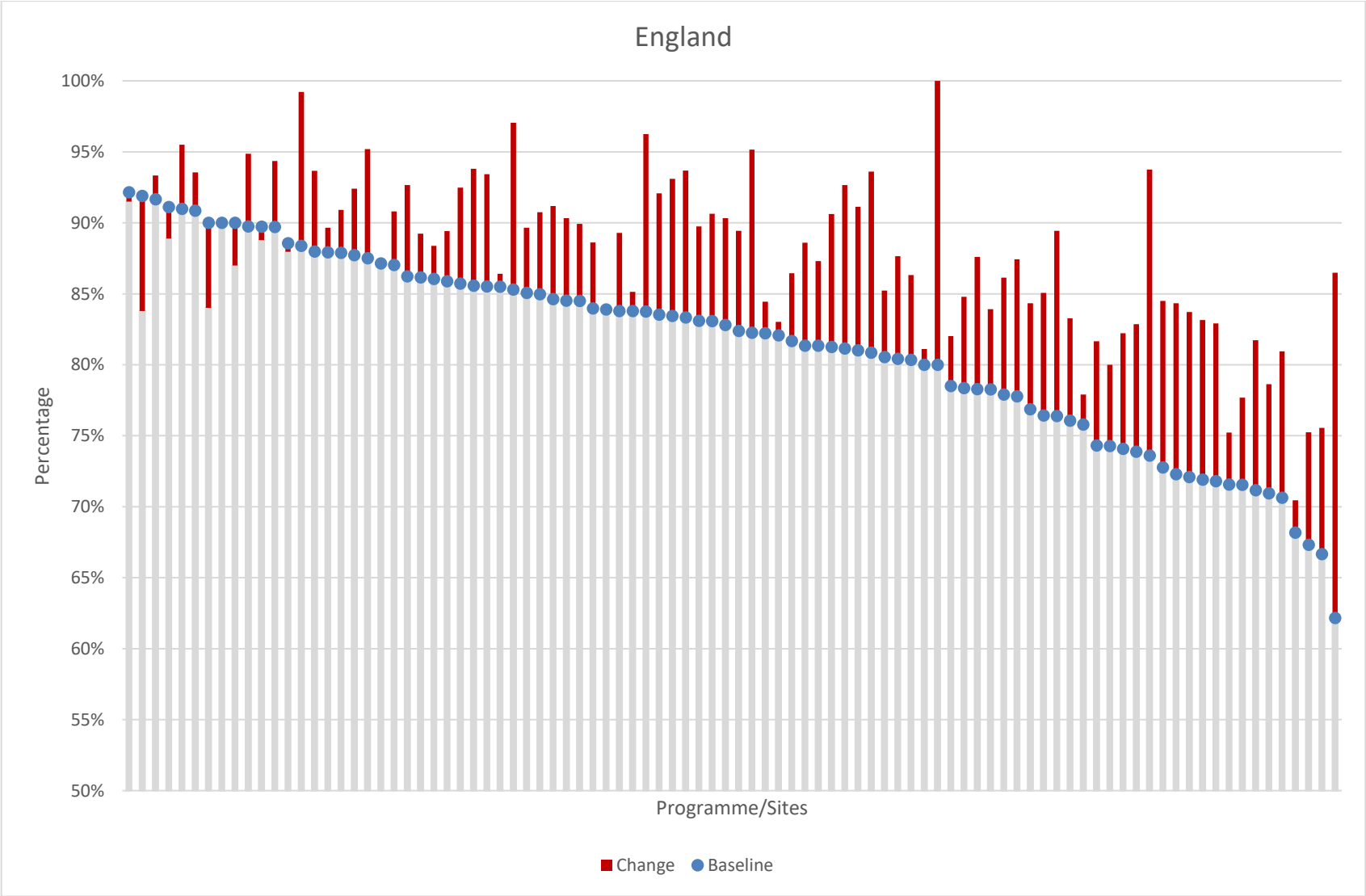


SUPPLEMENT 14

HADS Depression by Programme

This supplement shows the population’s change in depression post CR, data used was from electronic entry into the NACR from 2015-2016.



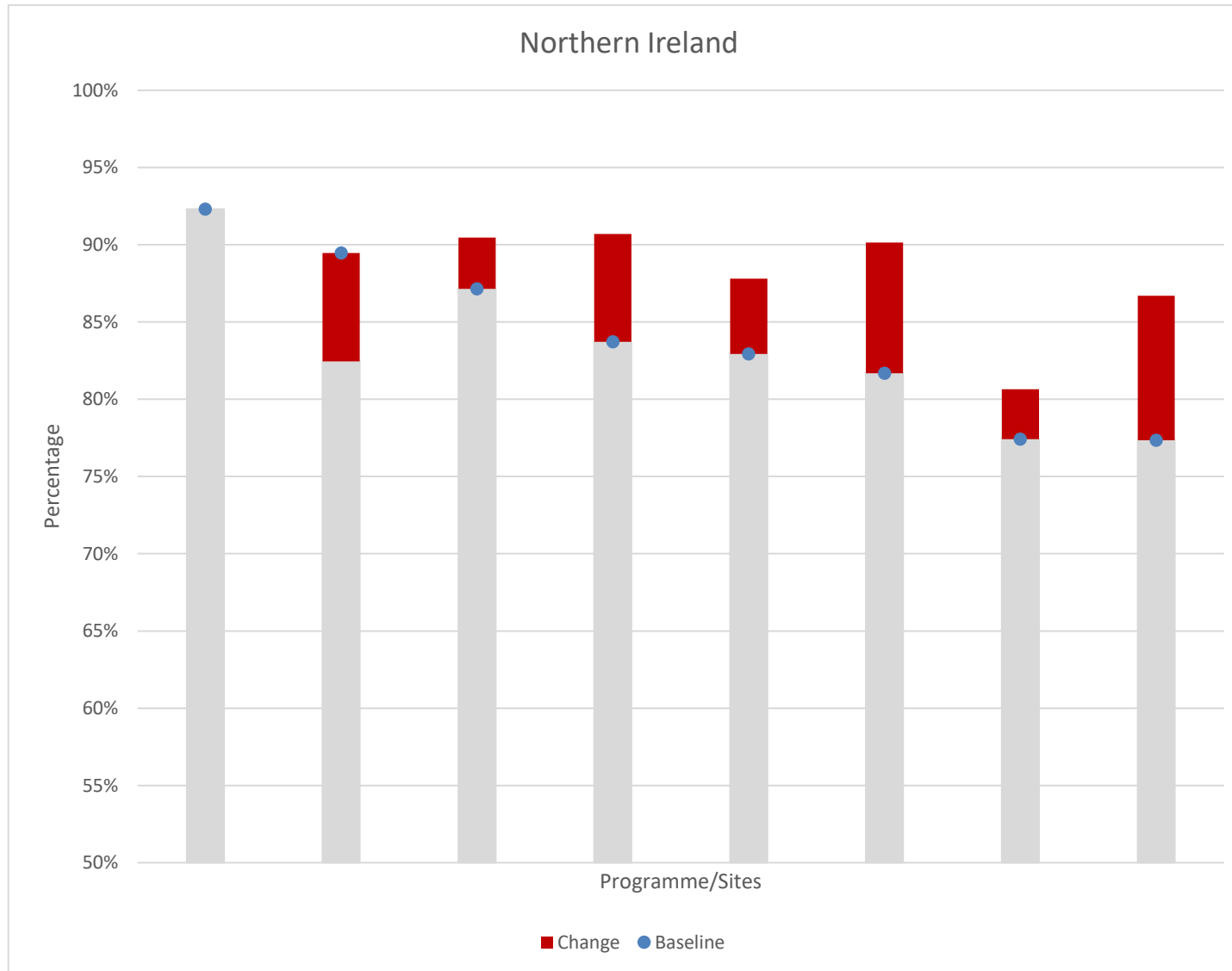
Programme/Site Name	Country	Pre			Post			Change
		Normal	Borderline	Clinically Depressed	Normal	Borderline	Clinically Depressed	Normal
Barking, Havering and Redbridge Hospitals NHS Trust (King George Hospital)	England	76%	14%	11%	78%	11%	12%	2%
Barking, Havering and Redbridge Hospitals NHS Trust (Queens Hospital)	England	74%	15%	12%	82%	11%	7%	8%
Aintree University Hospitals NHS Foundation Trust/Liverpool Community Health NHS Trust	England	81%	13%	6%	91%	5%	4%	10%
Ashford and St. Peter's Hospital NHS Trust (Ashford and St Peter's)	England	80%	12%	7%	88%	10%	3%	7%
Basildon and Thurrock University Hospitals NHS Foundation Trust (Essex Cardiothoracic Centre)	England	83%	10%	6%	93%	3%	3%	10%
Bedford Hospital NHS Trust	England	81%	14%	5%	94%	5%	1%	13%
Blackpool, Fylde and Wyre Hospitals NHS Foundation Trust	England	82%	11%	8%	86%	7%	6%	5%
Bradford Teaching Hospitals NHS Foundation Trust - Community Cardiac Rehabilitation (St Luke's Hospital/Queensbury Health Centre/Eccleshill Clinic/Bradford Royal Infirmary)	England	68%	16%	5%	70%	11%	7%	2%
Brighton and Sussex University Hospitals NHS Trust (Royal Sussex County Hospital)	England	76%	16%	8%	83%	10%	7%	7%
Buckinghamshire Hospitals NHS Trust	England	84%	12%	5%	89%	8%	3%	6%
Burton Hospitals NHS Trust	England	89%	5%	6%	88%	8%	4%	-1%
Calderdale and Huddersfield NHS Foundation Trust	England	76%	13%	9%	85%	8%	5%	9%
Central Manchester and Manchester Children's University Hospitals NHS Trust	England	67%	18%	13%	76%	16%	7%	9%
Chesterfield Royal Hospital NHS Foundation Trust	England	86%	8%	6%	94%	4%	2%	8%
City Health Care Partnership (Hull)	England	85%	9%	5%	86%	7%	7%	1%
Countess of Chester Hospital NHS Foundation Trust	England	88%	9%	3%	94%	3%	4%	6%
Croydon Health Services NHS Trust	England	84%	12%	4%	89%	10%	2%	5%
Derby Hospitals NHS Foundation Trust (Ilkeston Community Hospital and Royal Derby Hospital)	England	84%	10%	6%	84%	10%	6%	0%
Derbyshire Community Health Services NHS Foundation Trust (Chesterfield and Bolsover)	England	71%	18%	11%	81%	10%	10%	10%

Programme/Site Name	Country	Pre			Post			Change
		Normal	Borderline	Clinically Depressed	Normal	Borderline	Clinically Depressed	Normal
Doncaster and Bassetlaw Hospitals NHS Foundation Trust	England	74%	19%	7%	94%	5%	1%	20%
Dorset County Hospital NHS Foundation Trust	England	92%	5%	3%	93%	3%	3%	2%
East and North Hertfordshire NHS Trust (Lister Hospital and Queen Elizabeth II Hospital)	England	83%	11%	5%	91%	6%	3%	8%
East Cheshire NHS Trust	England	84%	8%	8%	85%	7%	8%	1%
East Lancashire Hospitals NHS Trust	England	78%	13%	9%	85%	8%	7%	6%
East Sussex Hospitals NHS Trust (Conquest Hospital)	England	90%	6%	4%	87%	10%	3%	-3%
East Sussex Hospitals NHS Trust (Eastbourne District General Hospital)	England	88%	6%	6%	91%	6%	3%	3%
Epsom and St Helier University Hospitals NHS Trust (Epsom Hospital)	England	81%	13%	6%	93%	7%	1%	12%
Epsom and St Helier University Hospitals NHS Trust (St Helier Hospital and Epsom Hospital)	England	81%	13%	6%	91%	3%	6%	9%
Frimley Park Hospital NHS Foundation Trust	England	83%	11%	6%	90%	6%	4%	7%
Great Western Hospitals NHS Foundation Trust	England	84%	9%	6%	90%	4%	5%	5%
Guy's and St Thomas' NHS Foundation Trust	England	72%	19%	9%	75%	11%	14%	4%
Hampshire Hospitals NHS Foundation Trust (Alton and Basingstoke & North Hampshire Hospital)	England	87%	9%	4%	91%	7%	3%	4%
Hampshire Hospitals NHS Foundation Trust (Royal Hampshire)	England	91%	7%	2%	94%	5%	1%	3%
Imperial Healthcare NHS Trust (Central, West London and Charing Cross and Ealing Community Cardiac Rehab)	England	74%	16%	9%	83%	11%	6%	9%
Kent Community Health NHS Trust	England	92%	0%	11%	84%	5%	14%	-8%
Kettering General Hospital NHS Trust	England	90%	7%	3%	90%	6%	4%	0%
King's College Hospital NHS Foundation Trust (Princess Royal University Hospital)	England	80%	15%	5%	86%	11%	3%	6%
Lancashire Teaching Hospitals NHS Foundation Trust (Chorley and South Ribble)	England	86%	8%	6%	88%	9%	3%	2%
Lancashire Teaching Hospitals NHS Foundation Trust (Royal Preston Hospital)	England	81%	13%	7%	85%	10%	5%	5%

Programme/Site Name	Country	Pre			Post			Change
		Normal	Borderline	Clinically Depressed	Normal	Borderline	Clinically Depressed	Normal
Maidstone and Tunbridge Wells NHS Trust (Maidstone Hospital)	England	77%	14%	9%	84%	10%	5%	7%
Maidstone and Tunbridge Wells NHS Trust (Tunbridge Wells Hospital at Pembury)	England	88%	9%	2%	99%	1%	0%	11%
Mid Cheshire Hospitals NHS Foundation Trust	England	78%	16%	5%	88%	9%	3%	9%
Mid Essex Hospital Services NHS Trust	England	90%	7%	3%	94%	3%	2%	5%
Mid Yorkshire Hospitals NHS Trust (Dewsbury and District Hospital)	England	85%	12%	3%	97%	0%	3%	12%
North Bristol NHS Trust	England	82%	13%	4%	84%	9%	7%	2%
North Cheshire Hospitals NHS Trust	England	71%	17%	11%	82%	13%	4%	11%
North Cumbria Acute Hospitals NHS Trust (West Cumberland Hospital)	England	82%	11%	6%	95%	3%	2%	13%
North Cumbria University Hospital Trust (Cumberland Infirmary)	England	85%	8%	8%	90%	5%	5%	6%
Northern Lincolnshire and Goole Hospital NHS Foundation Trust (Scunthorpe General Hospital)	England	74%	16%	10%	82%	8%	10%	7%
Northern Lincolnshire and Goole Hospitals NHS Foundation Trust (Diana Princess of Wales Hospital)	England	72%	18%	10%	78%	17%	5%	6%
Oxford Radcliffe Hospitals NHS Trust (Horton General Hospital and John Radcliffe Hospital)	England	78%	15%	7%	87%	8%	4%	10%
Papworth Hospital NHS Foundation Trust	England	82%	10%	8%	89%	5%	6%	7%
Pennine Acute Hospitals NHS Trust (North Manchester General Hospital)	England	72%	13%	15%	83%	11%	6%	11%
Peterborough and Stamford Hospitals NHS Foundation Trust (Peterborough and City Hospital)	England	82%	8%	9%	83%	9%	8%	1%
Poole Hospital NHS Foundation Trust	England	83%	13%	5%	94%	5%	2%	10%
Portsmouth Hospitals NHS Trust	England	92%	5%	3%	92%	8%	0%	-1%
Rotherham NHS Foundation Trust (Rotherham Community Health Centre)	England	85%	9%	6%	90%	8%	2%	5%
Royal Berkshire NHS Foundation Trust (Royal Berkshire Hospital and West Berkshire Community)	England	84%	13%	4%	96%	1%	3%	13%

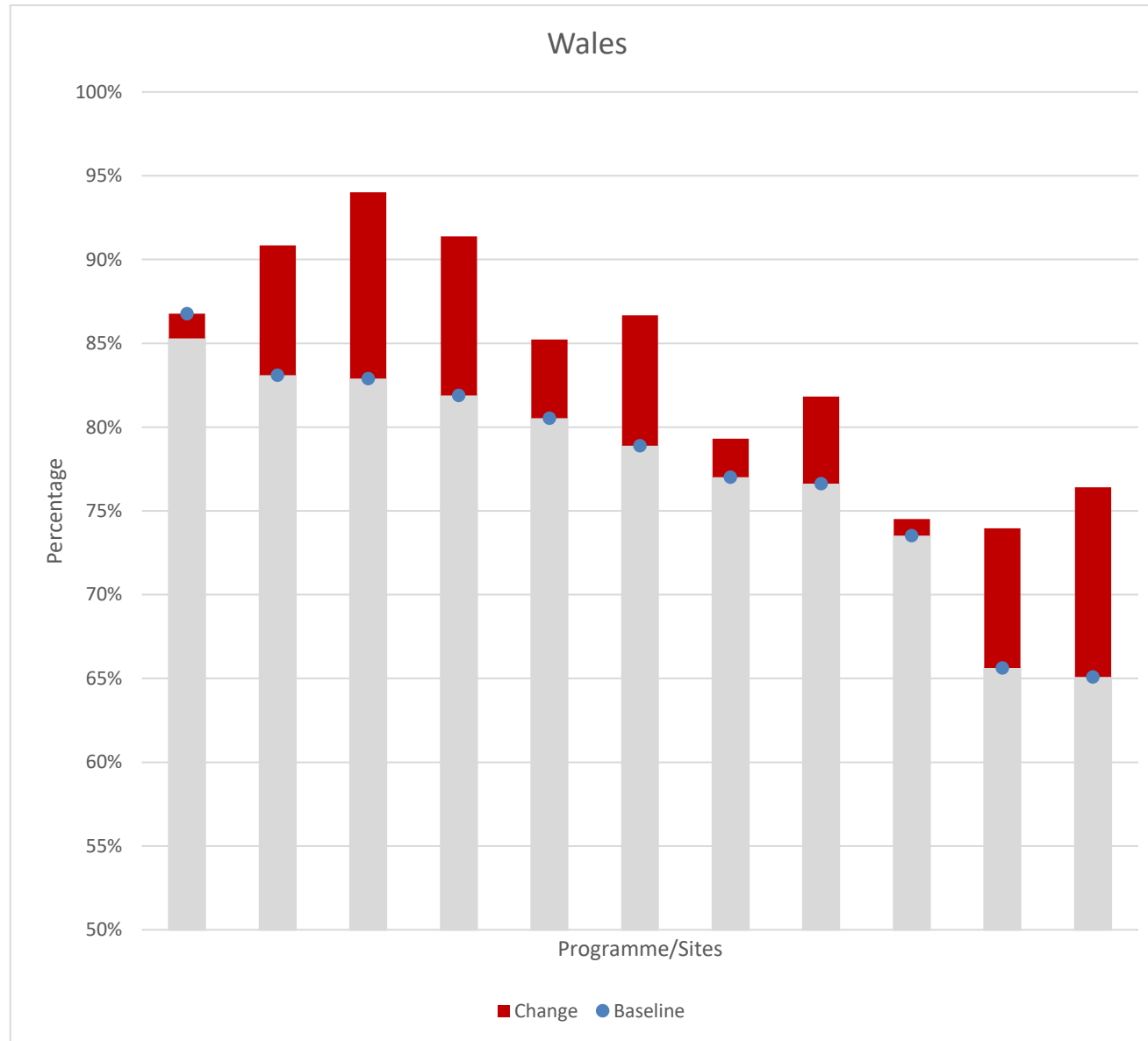
Programme/Site Name	Country	Pre			Post			Change
		Normal	Borderline	Clinically Depressed	Normal	Borderline	Clinically Depressed	Normal
Royal Free London NHS Foundation Trust (Chase Farm Hospital/Barnet Hospital)	England	73%	15%	12%	85%	10%	6%	12%
Royal Liverpool and Broadgreen University Hospital and NHS Trust (Broadgreen Hospital and Royal Liverpool University Hospital)	England	79%	12%	10%	82%	12%	7%	4%
Royal Surrey County Hospital NHS Trust	England	88%	8%	4%	92%	5%	3%	5%
Royal United Hospital Bath NHS Trust	England	91%	9%	0%	95%	3%	2%	5%
Salisbury NHS Foundation Trust	England	84%	13%	4%	92%	7%	2%	9%
Sherwood Forest Hospitals NHS Foundation Trust (King's Mill Hospital)	England	88%	7%	5%	90%	9%	2%	2%
Solent NHS Trust	England	86%	11%	2%	92%	5%	1%	7%
Southend University Hospital NHS Foundation Trust	England	90%	7%	3%	89%	7%	4%	-1%
Southport and Ormskirk Hospital NHS Trust	England	81%	11%	8%	89%	8%	3%	7%
St George's Healthcare NHS Trust (St George's Hospital/Queen Mary's Hospital)	England	81%	11%	7%	87%	7%	5%	6%
Stockport NHS Foundation Trust	England	85%	11%	4%	91%	8%	1%	6%
The Hillingdon Hospital NHS Trust	England	71%	15%	15%	79%	15%	7%	8%
The Lewisham Hospitals NHS Trust	England	72%	17%	11%	83%	13%	4%	11%
The Royal Bournemouth and Christchurch Hospitals NHS Foundation Trust	England	85%	12%	4%	91%	8%	1%	7%
The Royal Wolverhampton Hospitals NHS Trust	England	91%	7%	2%	89%	8%	3%	-2%
The Whittington Hospital NHS Trust	England	67%	20%	13%	75%	13%	12%	8%
Torbay Care Trust	England	80%	20%	0%	100%	0%	0%	20%
University College London Hospitals NHS Foundation Trust	England	72%	16%	12%	84%	7%	9%	12%
University Hospital of North Staffordshire NHS Trust (County Hospital Stafford and Royal Stoke University Hospital)	England	74%	23%	6%	80%	17%	6%	6%
University Hospital Of South Manchester NHS Foundation Trust	England	78%	14%	7%	86%	9%	4%	8%
University Hospitals Coventry and Warwickshire NHS Trust (Hospital of St Cross)	England	86%	7%	6%	93%	5%	3%	6%

Programme/Site Name	Country	Pre			Post			Change
		Normal	Borderline	Clinically Depressed	Normal	Borderline	Clinically Depressed	Normal
University Hospitals Coventry and Warwickshire NHS Trust (University Hospital, Coventry)	England	90%	8%	2%	84%	8%	8%	-6%
University Hospitals Of Leicester NHS Trust (Glenfield Hospital, Leicester General Hospital and Leicester Royal Infirmary)	England	78%	13%	9%	84%	11%	5%	6%
Warrington and Halton Hospitals NHS Foundation Trust	England	86%	7%	8%	93%	4%	3%	8%
West Hertfordshire Hospitals NHS Trust (Hemel Hempstead)	England	87%	9%	6%	87%	9%	6%	0%
West Hertfordshire Hospitals NHS Trust (St Albans City Hospital)	England	86%	9%	5%	89%	2%	8%	4%
West Hertfordshire Hospitals NHS Trust (Watford)	England	83%	13%	4%	90%	6%	3%	8%
West Suffolk Hospitals NHS Trust	England	88%	12%	1%	95%	5%	0%	8%
Western Sussex Hospitals NHS Foundation Trust (St Richards)	England	86%	8%	6%	89%	6%	5%	3%
Wirral Community NHS Foundation Trust (Wirral Heart Support Centre)	England	72%	14%	13%	84%	11%	5%	12%
Worthing and Southlands Hospitals NHS Trust	England	76%	17%	6%	89%	4%	6%	13%
York Teaching Hospital NHS Foundation Trust (Scarborough/Whitby/Ryedale/Whitby Community Hospital)	England	62%	27%	11%	86%	11%	3%	24%
York Teaching Hospital NHS Foundation Trust (York Hospital)	England	90%	5%	5%	95%	3%	3%	5%
Your Healthcare CIC (Surbiton Hospital)	England	80%	10%	9%	81%	12%	6%	1%



Programme/Site Name	Country	Pre			Post			Change
		Normal	Borderline	Clinically Depressed	Normal	Borderline	Clinically Depressed	Normal
Belfast Health and Social Care Trust (Belfast City Hospital)	Northern Ireland	77%	13%	9%	87%	8%	5%	9%
Northern Health and Social Care Trust (Antrim Area Hospital)	Northern Ireland	84%	9%	7%	91%	9%	0%	7%
Northern Health and Social Care Trust (Causeway Hospital)	Northern Ireland	82%	10%	8%	90%	7%	3%	8%
Northern Health and Social Care Trust (Mid-Ulster Hospital)	Northern Ireland	92%	6%	2%	92%	6%	2%	0%
Northern Health and Social Care Trust (Whiteabbey Hospital)	Northern Ireland	89%	5%	5%	82%	9%	9%	-7%
South Eastern Health and Social Care Trust (Downe Hospital)	Northern Ireland	77%	10%	13%	81%	10%	10%	3%
South Eastern Health and Social Care Trust (Ulster Hospital)	Northern Ireland	87%	8%	5%	90%	7%	3%	3%
Southern Health and Social Care Trust (South Tyrone Hospital)	Northern Ireland	83%	9%	9%	88%	6%	6%	5%





Programme/Site Name	Country	Pre			Post			Change
		Normal	Borderline	Clinically Depressed	Normal	Borderline	Clinically Depressed	Normal
Abertawe Bro Morgannwg University Health Board (Morrison Hospital, Singleton Hospital)	Wales	77%	13%	10%	82%	16%	2%	5%
Abertawe Bro Morgannwg University Health Board (Neath/Port Talbot Hospital)	Wales	65%	20%	16%	76%	11%	13%	11%
Abertawe Bro Morgannwg University Health Board (Princess of Wales Hospital)	Wales	83%	12%	4%	94%	4%	1%	11%
Aneurin Bevan University Health Board (County Hospital)	Wales	79%	11%	10%	87%	7%	7%	8%
Aneurin Bevan University Health Board (Nevill Hall Hospital)	Wales	81%	9%	10%	85%	10%	5%	5%
Aneurin Bevan University Health Board (St Woolos Hospital)	Wales	83%	11%	7%	91%	6%	4%	8%
Aneurin Bevan University Health Board (Ysbyty Ystrad Fawr)	Wales	66%	17%	18%	74%	17%	9%	8%
Betsi Cadwaladr University Health Board (Wrexham Maelor Hospital, East Cardiac Rehabilitation Service)	Wales	87%	4%	9%	85%	12%	3%	-1%
Cardiff and Vale University Health Board (University Hospital of Wales, Llandough Hospital)	Wales	82%	12%	6%	91%	6%	3%	9%
Hywel Dda University Health Board (Bronglais Hospital)	Wales	74%	17%	10%	75%	12%	14%	1%
Hywel Dda University Health Board (Glangwili Hospital, Prince Philip Hospital)	Wales	77%	14%	8%	79%	15%	5%	2%
Isle of Man (Nobles Hospital)	Other	90%	8%	2%	97%	1%	2%	7%